

Franklin High School

2022-2023 Pre-Registration



Your Counselor

Main Campus

A-Chan → *Ms. Priego*
Chao-J.Fernandez → *Mrs. Schuler*
K.Fernandez-Kim → *Ms. Rendon*
Kin-Oli → *Mrs. Jamison*
Olj-San → *Mr. Radecki*
Sao-Z → *Ms. Arriola*

Magnet Campus

A-Fran → *Mrs. Martinez*
Frao-Ord → *Ms. Palacios*
Ore-Z → *Mr. Hunter*
Dual Credit/Projects → *Mrs. Pizana*



Start thinking about college...

- Visit the Go Center to find out about different colleges.
- Junior year is a good time for college visits.
- Explore the websites of your chosen colleges for important high school information.
- The PSAT is a National Merit Scholarship Qualifying Test. This contest awards more scholarships than any other.



Our goal is for 100% of students to be College, Career, and Military Ready **CCMR**

TSI 20 Math 950 or better or under 950 with a diagnostic score of 6
ELAR 945 or better with Essay of 5+ or under 945 with a an essay of 5+ and diagnostic of 5+

TSI 1.0 Math 350 or higher
Reading 351 or higher

SAT Math 530
Evidence Based Reading and Writing 480

ACT Composite of 23 and minimum of 19 in both Math and Reading

College Prep Math & English passing score of 70+
Seniors must score 75 or better per semester to be TSI exempt for UTEP and EPCC

AP/IB 3 or better on any qualifying AP exam
4 or better on an IB exam

Dual Credit Successfully complete 3 or more hours in either DC English or DC Math
Successfully complete 9 or more hours in any dual credit courses

OnRamps Successfully complete and **earn college credit** for an OnRamps course

CCTE Earn an industry certification

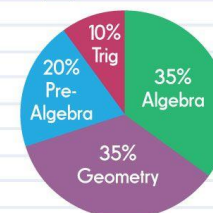
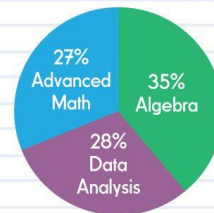
Military Enlists in any US Armed Forces

New SAT vs. ACT

Sections

Reading	52 Questions/65 min.	40 Q/35 min.
English	44 Q/35 min.	75 Q/45 min.
Math (calculator)	38 Q/55 min.	60 Q/60 min.
Math (no calc)	20 Q/35 min.	
Science		40 Q/35 min.
Essay	Optional/50 min.	Optional/40 min.

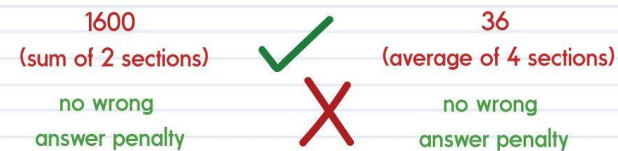
Math Topics



Time



Scoring



Which to take?

Try taking practice tests for both!



TESTIVE SAT/ACT Prep

www.testive.com

Sources: collegeboard.org and actstudent.org

Please join the following as Franklin Students:

<https://www.goingmerry.com/c/lisas-ovv6jp> This is the **Going Merry** Site where scholarships will be tracked for graduation. Please complete the profile to the best of your ability so you get the most out of the scholarships that are right for you.

From your **Go-Center**



Download the **Band app** on your phone and join the Franklin Go Center for all important information about college visits, graduation, scholarships, and more!

Update or create your raise.me account to earn micro grants from colleges that DO NOT have to be paid back. The more information you enter the more you earn. Follow as MANY schools as you can and update your information every semester. Remember our grades are by semester and number grades not letter grades.

Call Ms. Schoenbrun at 915-302-0142 for more help on anything for college, career and military readiness.

Top 10% Rule

Students who graduate in the top ten percent of their graduating class are eligible for admission to any *public* college or university in Texas.

**Exception UT Austin admits top 6%*

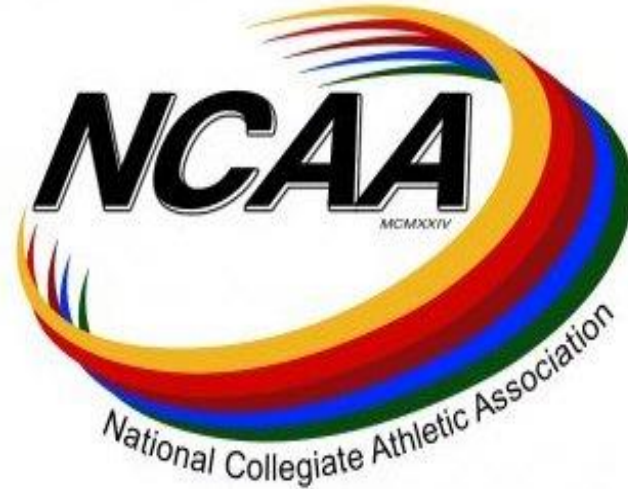


NCAA Eligibility Center

Athletes desiring to play at the collegiate level should register at this website:

www.eligibilitycenter.org

***Credits earned through Credit by Exam or on Edgenuity DO NOT count toward the core requirements for NCAA eligibility.





AP vs. Dual Credit

AP

- AP classes ALWAYS count as HS credit.
- Classes are taken on the FHS Campus.
- College level coursework with an AP exam that could *potentially* earn college credit.
- Acceptance of credit nationwide is based on the individual University. Typically a score of 3 or higher is required to earn credit. **Student must contact college to verify acceptance.**
- Open enrollment
- Students must pay to take the AP exam. (Fee is much less if you qualify for Free and Reduced Lunch.)

Dual Credit

- ▶ Check with your chosen college to see if the DC course counts as the named HS course or as an elective.
- ▶ Classes are taken on the FHS Campus.
- ▶ Coursework will transfer to most Texas public universities with a grade of “C” or better. Coursework **might** transfer to other Universities. **Student must contact college to verify acceptance.**
- ▶ **Students must meet TSI (college readiness) standards to enroll.**
- ▶ Tuition is free.

Pre-AP Course Offerings

English 1 Pre-AP

English 2 Pre-AP

Algebra 1 Pre-AP

Geometry Pre-AP

Algebra 2 Pre-AP

Biology Pre-AP

Chemistry Pre-AP

Anatomy & Physiology Pre-AP

Spanish 3 Pre-AP

French 3 Pre-AP

AP Course Offerings

AP English 3		Physics 1 AP	
AP English 4		Biology AP	
Calculus AB AP (year long)		Chemistry AP	
Calculus AB AP (fall)		Environmental Science AP	
Calculus BC AP (Spring)		Physics 2 AP	
Statistics AP		AP Spanish 4	
AP Human Geography		AP Spanish 5	
AP World History		AP French 4	
AP US History		AP Art Drawing	
AP Macro Economics*		AP Art 2D Design	
AP European History		AP Art 3D Design	
AP US Govt		AP Art History	
AP Comparative Govt (Elective Credit Only)			
AP Psychology			
		* Will satisfy Economics graduation requirement	

Dual Credit Courses Offered at Franklin

- Dual Credit U.S. History
- Dual Credit Sociology
- Dual Credit English III
- Dual Credit Music Appreciation
- Dual Credit Speech
- Dual Credit Economics
- Dual Credit Learning Framework



Courses offerings are based on student request and student must pass TSI test to qualify. If you're selecting a dual credit class for next school year, please check your EPISD email for instructions from Ms. Pizana.



The University of Texas at Austin

OnRamps

- On-Ramps English III
- On-Ramps Physics I
- On-Ramps Earth & Space
- On-Ramps Chemistry
- On-Ramps Pre-Calculus
- On-Ramps Physics II
- On-Ramps US History

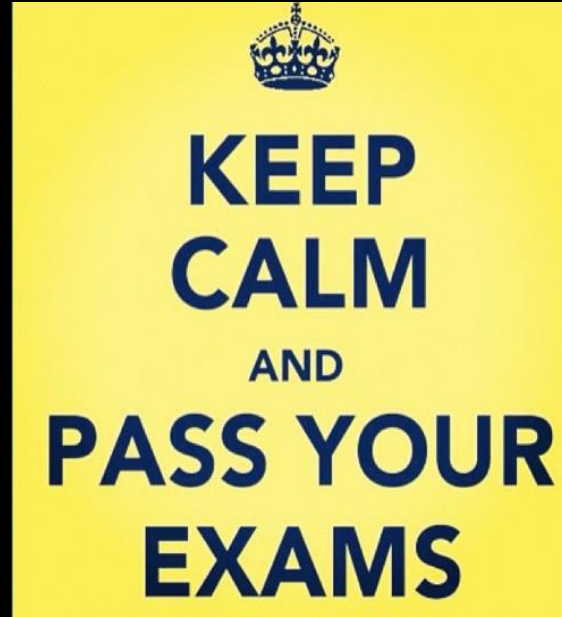
Required 26 credits needed to graduate

- **4 English** -English 1, English 2, English 3, English 4
- **4 Math** -Algebra 1, Geometry, Algebra 2 & an Advanced Math
- **4 Science** -Biology and 3 Advanced Science courses
- **3 History** -W. Geography, AP Human Geography or World History (1.0), U.S. History (1.0), US Government (.5) & Economics (.5)
Franklin Recommends 4 Years
- **2 Foreign Language** (same language)
- **1 Fine Arts**
- **.5 Speech** Professional Communications or Communication Applications
- **.5 Health**
- **1 Physical Education**
- **1 Career and Technology Course (CTE)**
- **1 Elective credit**
- **4.0 Endorsement Credits**



End Of Course Exams you must pass before graduation:

- English 1
- English 2
- Biology
- Algebra 1
- US History



Endorsements

4 Credits

What is an Endorsement?

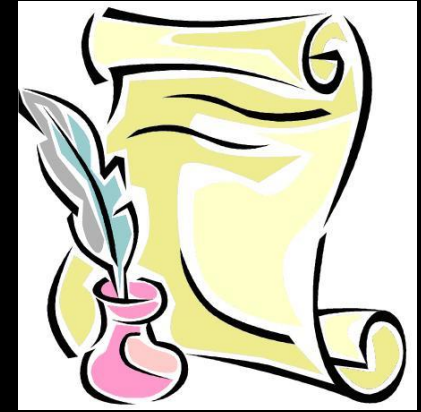
An endorsement is earned when a student completes a sequence of courses in a concentrated area of study.

Endorsement Areas:

- *Arts and Humanities
- *Business and Industry
 - *Multidisciplinary
 - *Public Services
- *Science, Technology, Engineering, Mathematics (STEM)



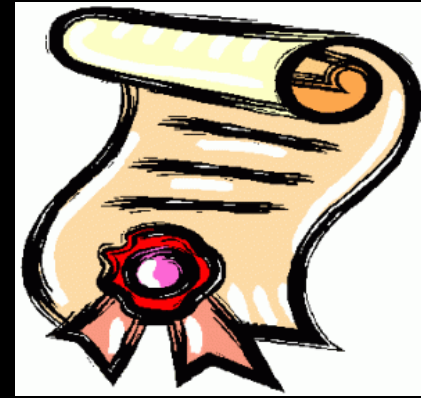
Your Endorsement Letter:



- Graduation is granted based on completing Foundation and Endorsement courses.
- A signed copy is on file with your counselor from 9th Grade

Performance Acknowledgments

will award students a cord at graduation!



Dual Credit Courses: Complete 12 DC hours with a 3.0 or higher, or earn an Associate degree while in high school.

ADVANCED PLACEMENT or IB: Earn a score of 3 or above on an AP exam, or earn a score of 4 or above on an IB exam.

PSAT,ACT-ASPIRE,SAT, or ACT:

PSAT, ACT-PLAN, ACT/SAT Scores: Earn a total score of 1310 on SAT, Earn a composite score of 28 on ACT, Earn National Merit Recognition on PSAT, or earn college readiness benchmarks on at least three of the five subject tests on ACT Aspire

BUSINESS OR INDUSTRY CERTIFICATION/LICENSE: Earn an nationally recognized business or industry certification or earn a certification or licensure representing a student's substantial course of study or end of program knowledge

BILINGUALISM:

A. Completed all English Language Arts requirements and maintained a minimum GPA of 80 on a scale of 100; and

B. Satisfied ONE of the following:

- i. completed 3 LOTE credits in the same language with a mini. of GPA of 80 on a scale of 100; or
- ii. demonstrated TEKS prof. in Level IV of LOTE with a min. GPA of 80 on a scale of 100; or
- iii. completed at three credits in LOTE with minimum of 80 on a scale of 100; or
- iv. demonstrated proficiency in LOTE by

I. score of 3 or higher on AP LOTE exam; or

II. score of 4 or higher on IB LOTE exam; or

III. national assessment proficiency of at least Intermediate High or equivalent

In addition, an English Language Learner must also complete:

Participated in and met exit criteria for bilingual or ESL program; and

Scored at the Advanced High Level on TELPAS

Time to select courses...

We will be selecting 8 total classes and three alternates that will align with your endorsement

COURSE SCHEDULE

Start by entering your:

First Name

Last Name

Email Address

Student Id

Contact Phone Numbers

Endorsement

English

English II or PAP English II

Math

**If you're enrolled in Algebra 1 please select
Geometry, PAP Geometry, or Dual Language
Geometry**

**If you're enrolled in Geometry please select
Algebra 2 , Algebra 2 PAP, or Dual Language
Algebra 2**

Science

**Chemistry, PAP Chemistry, Dual Language Chemistry
or On-Ramps Chemistry**

Social Studies

World History or AP World History

Or if taken out of sequence

World Geography or AP Human Geography

Foreign Language

2 credit required

S

- Spanish
- French

(Must be 2 years of the same language)

- It is the district recommendation that NATIVE speakers of a language be placed in Level 3 courses (i.e. Spanish 3).
- FHS will adhere to this recommendation unless the parent opts out via written request.



P.E.

1 credit required

- PE Aerobics
- PE Individual Sports
- Major Sports-Coach approved. All are double-blocked except for Cheer and Wrestling. Only select one sport, changes will occur after season ends.
- Air Force JROTC
- Marching Band
- Dance
- Any combination of these courses



CTE

1 credit required *Must be 1.0 credit of the SAME course*

- Principles of Architectural Design
- Business Info. Mgmt. I (BIM)
- Principles of Applied Engineering (STEM)
- Digital Interactive Multimedia
- Digital Design and Media Production
- Engineering Design & Presentation
- Interior Design
- Accounting 1 (Pre-Req is BIM)
- Accounting 2 (Pre-Req is Accounting 1)
- Architectural Design (Pre-Req is Prin. Arch)
- Robotics & Automation (Pre-Req is STEM)
- Robotics & Automation 2 (Pre-Req is Robotics 1)
- Money Matters
- Banking & Finance



Speech

Professional Communication

.5 credit or Dual Credit Speech (9th period only)

AND



.5 Credit



Fine Arts

1 credit required

- Art
 - AP Art History
 - Band and Marching Band
 - Choir
 - Principles of Dance
 - World Dance Forms—Ballroom Dance
 - Guitar
 - Orchestra
 - Piano
 - Theater
 - Technical Theatre
 - DC Music Appreciation (Must enroll in full year to satisfy fine art requirement but 1 semester will be dual credit)
 - Music Appreciation
- Must be 1.0 credit in the SAME genre



Counselors by Alpha

Counselors-Main Campus:

Debra Priego	A – CHAN	dxpriego@episd.org	ext 62221
Laura Schuler (Lead Counselor)	CHAO-J.FERNANDEZ	lschule@episd.org	ext 62226
Vanessa Rendon	K.FERNANDEZ-KIM	vyrendon@episd.org	ext 62223
Cathryn Jamison	KIN-OLI	cbjamison@episd.org	ext 62142
Robert Radecki	OLJ-SAN	mihunter@episd.org	ext 62231
Melissa Arriola	SAO-Z	maarriol@episd.org	ext 62222

Counselors-Magnet Campus

Courtney Martinez	A-FRAN	clbutter@episd.org	ext 62405
Lori Palacios	FRAO-ORD	lepalaci@episd.org	ext 62406
Marc Hunter	ORE – Z	mihunter@episd.org	ext 62412
Maria Pizana	Project Counselor	mapizana@episd.org	ext 62233

Thank You

Graduation is granted based on completing Foundation & Endorsement courses as well as meeting success on the 5 → require EOC exams!

